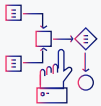


# Swimlane Turbine For MSSPs

The force multiplier that is the key to MSSP business growth and profitability



## → Top Benefits



Increase SOC efficiency by 60%



Save 45 minutes per investigation



Grow business by 30% without adding headcount



Reduce cost of goods sold (COGS)



Reduce MTTD and MTTR for clients



Expand revenue streams with extensible use cases

## The MSSP Challenge

Multiple clients means that alerts, attack surface, silos and processes are multiplied.

From alert fatigue, to the evolving threat landscape and the security talent shortage, MSSPs face all of the same challenges that riddle the security industry at large, but their obstacles don't stop there.

MSSPs feel the pain of context switching, complex siloed technologies and ensuring continuous compliance much more pervasively than their enterprise counterparts. They need to hunt threats and execute incident response processes for multiple clients simultaneously. In order to do this effectively and maintain profitability for their business, service providers need technology that is high performing, scalable and leverages cutting edge innovations.

## The Cloud-Native Solution

Security automation drives efficiencies and reduces costs of goods sold.

Swimlane Turbine is a low-code security automation platform that combines human and machine intelligence to serve as the system of record for security. Turbine transcends traditional security orchestration automation and response (SOAR) platforms with its seamless ingestion of large data sets, composable user interface and robust case management application.

The platform is unique because of its Active Sensing Fabric that gathers and actions on hard-to-reach telemetry the instant threats occur—not after detection, aggregation and manual alert triage.

## KEY FEATURES

### Active Data Sensing, Enrichment, De-duplication and Correlation

Turbine webhooks and remote agents ingest, de-duplicates, correlate and enrich data from broad and hard to reach telemetry sources.



Low-code dashboard widgets visualize MSSP client cases by severity level.

### Multi-Tenant and Multi-Brand Infrastructure

Turbine is a cloud-native platform, which delivers greater resilience, scale, performance and lower cost-of-goods sold for MSSPs.

### Dynamic Remote Agents

Remote agents are highly secure restless sensors that connect Turbine to internal systems without the need for MSSPs to configure complicated networks or multiple VPNs.

### Ecosystem-Agnostic Integrations

Turbine uses connectors to deliver real-time integration with any REST API. Pre-built connectors available through an in-app marketplace, and on-demand connectors can be built at no cost.

### Generative Artificial Intelligence

Turbine offers a pre-built ChatGPT connector in its in-app marketplace. This integration can be used to summarize alerts and query the internet or Swimlane documentation to help answer questions.

### Community-Sourced Threat Intelligence & Enrichment

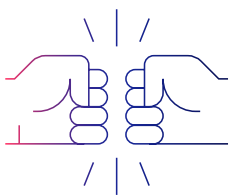
Turbine can be used to correlate IOC data across an MSSP's entire customer base. This results in community-sourced threat intelligence that improves investigation speed and accuracy.

### Highly Composable Reporting & Analytics

Combines human and machine intelligence in Turbine to generate actionable insights like performance metrics, incident response times, automation efficiency and other KPIs.

### Unlimited Users and Role-Based Access Controls

The Turbine full-featured platform is available to MSSPs with no-charge for additional users. Robust role-based access control (RBAC) helps ensure secure automation development.



#### Get Started

Join NTT Data, Softcat, Lumen, 1898 & Co, ProCircular and many other MSSPs of all sizes who are partnering with Swimlane to scale their business.



Our customers have changing environments. They might change their SIEM system, or email system—for the analysts, it has to be exactly the same system. For us, Swimlane is the main interface that we're using...and that gives us a great advantage. Not just for us, when we serve our customers, but also for the engineers on our customers' side that have changing environments.

**NTT DATA**



Swimlane is the leader in low-code security automation. The Swimlane Turbine platform unifies security operations in-and-beyond the SOC into a single system of record that helps reduce process and data fatigue, while helping security leaders overcome chronic staffing shortages and more easily quantify business value and the efficacy of security operations.